

BREEZE Incident Analyst Overview

Hazardous Release Modeling

Prepared by:

Brian Holland, M.S.



***BREEZE* Software**

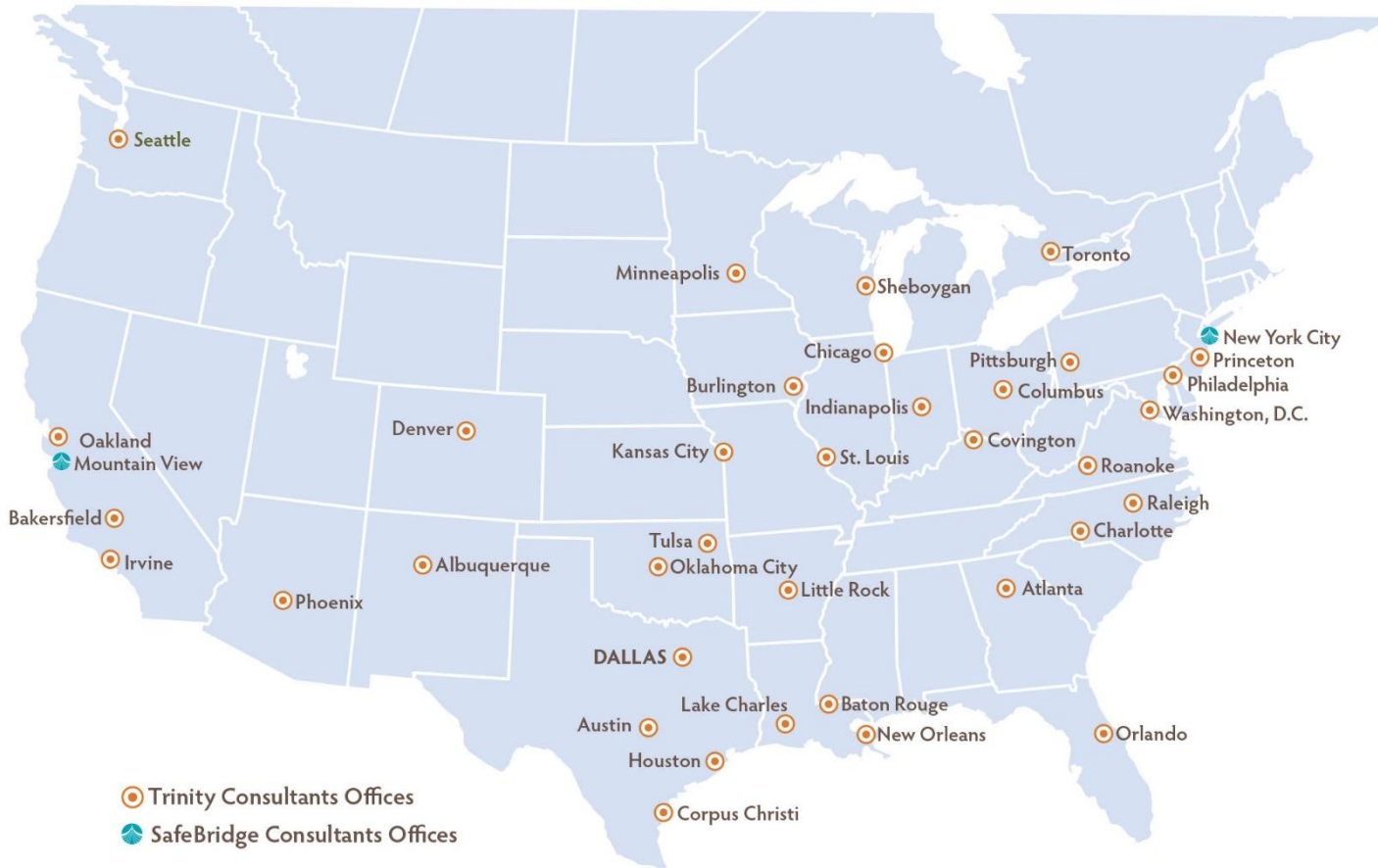
12770 Merit Drive | Suite 900 | Dallas, TX 75251

+1 (972) 661-8881 | breeze-software.com

About Trinity Consultants

- > EH&S consulting firm established in 1974, headquartered in Dallas, Texas
- > Provides a unique blend of consulting services, software/data, and training to meet the needs of clients
- > Serves more than 1,800 clients globally and support nearly 4,000 users of our *BREEZE*® modeling software in more than 70 countries

Our Locations



CHINA



MIDDLE EAST



UNITED KINGDOM

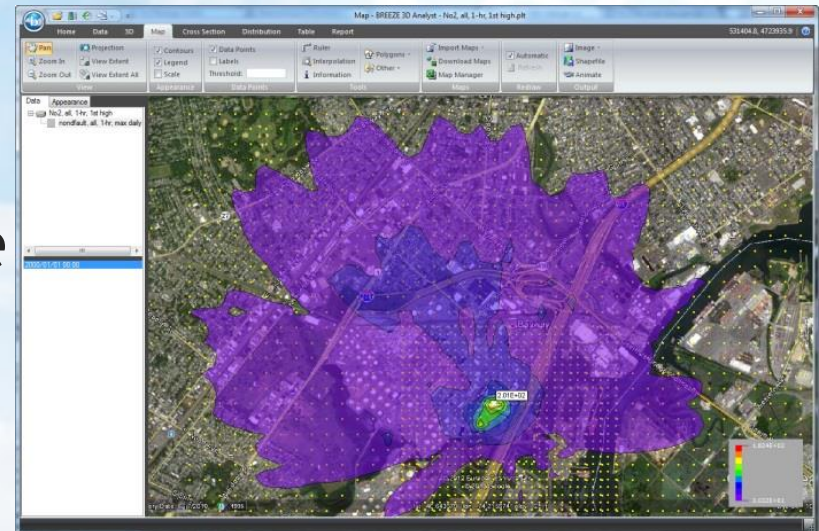


BREEZE Software, Data, and Services

- > Software for environmental, health, and safety modeling
 - ❖ Widely-respected, regulatory compliant models
 - ❖ Microsoft Gold Certified Partner
 - ❖ 4000+ users worldwide

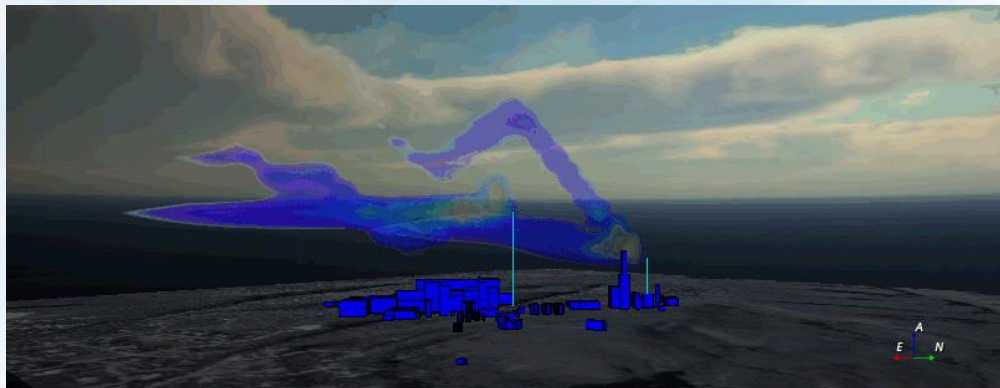


- > Consulting Services
 - ❖ Specialty EH&S modeling
 - ❖ Deep technical knowledge
 - ❖ Custom software/web development
- > Model-Ready Data

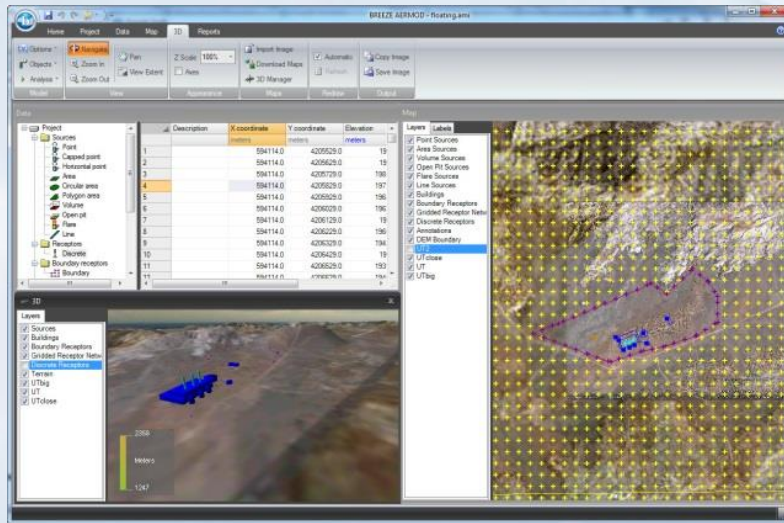


BREEZE Software Features

- > Intuitive interfaces simplify setup of complex models
- > Advanced model output:
 - ❖ Data analysis and post-processing tools
 - ❖ 2D/3D Contours
 - ❖ Export to Google Earth, GIS shapefiles, video



BREEZE Software Focus Areas

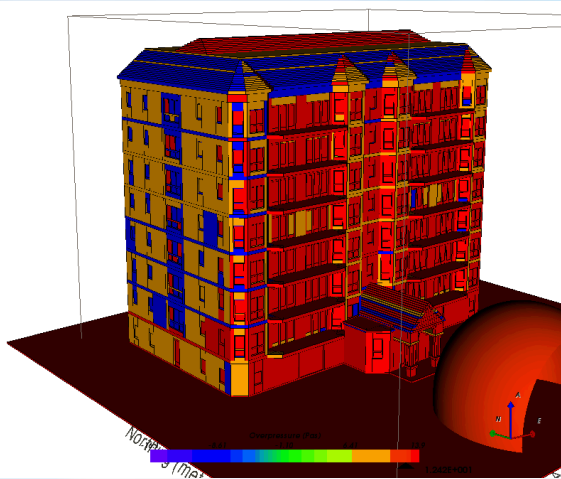


Air dispersion modeling tools for:

- ❖ Continuous emissions (normal facility operations)
- ❖ Accidental releases
- ❖ Mobile sources

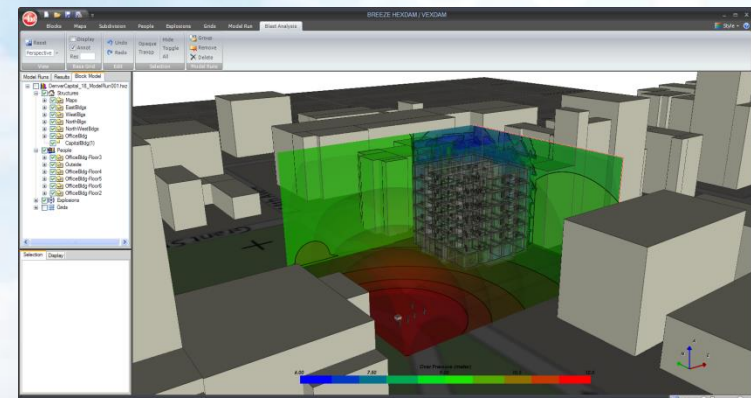
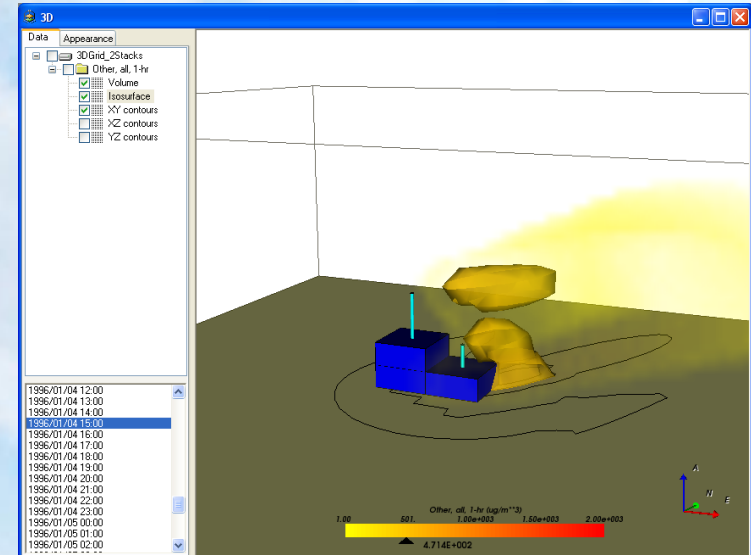
Risk management and emergency response tools for:

- ❖ Accidental atmospheric releases
- ❖ Fire/Explosions
- ❖ Human Health Risk Assessment
- ❖ Noise Modeling



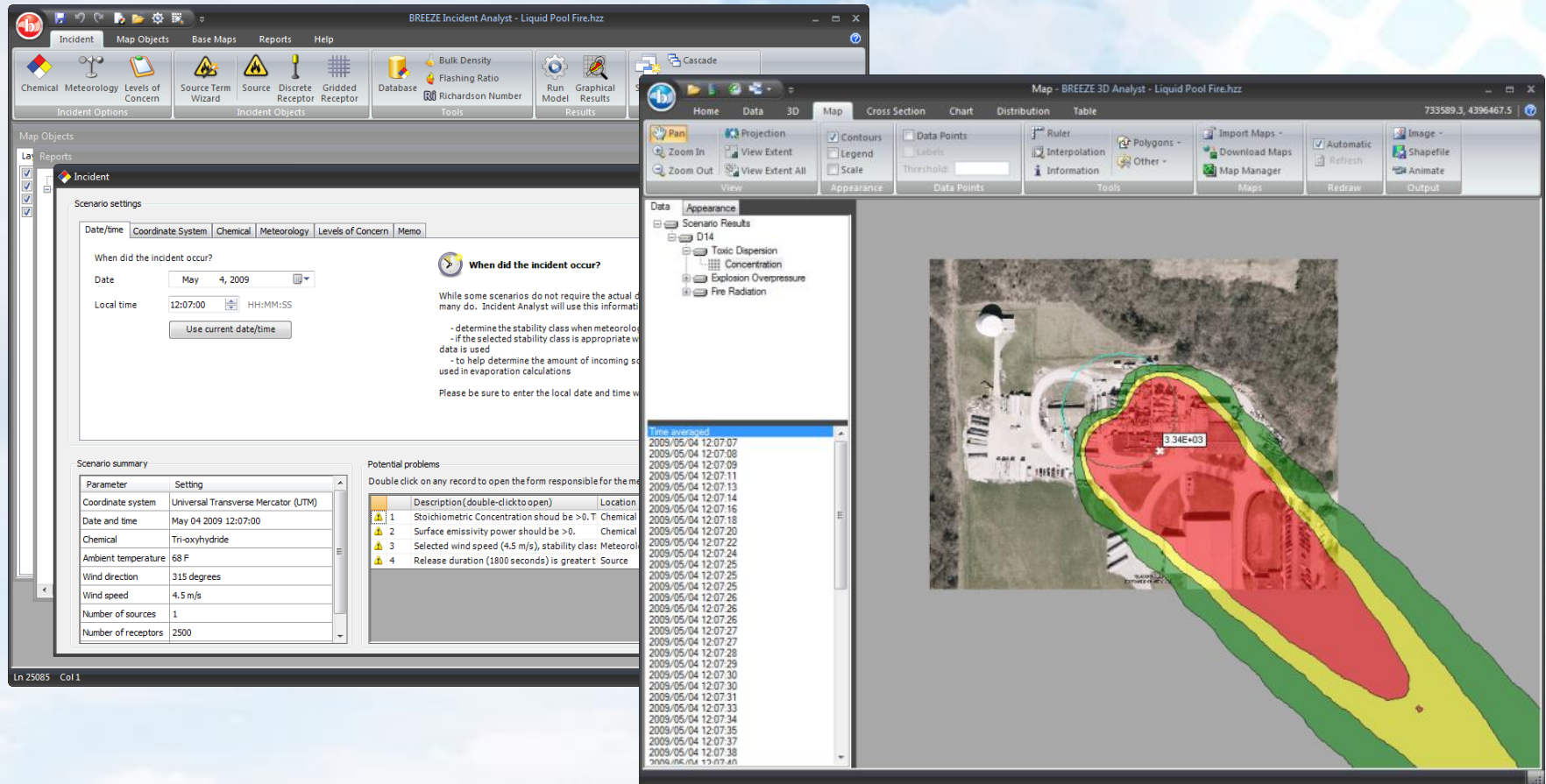
BREEZE Software Products

- > BREEZE AERMOD
- > BREEZE CALPUFF
- > BREEZE Incident Analyst
- > BREEZE ExDAM
- > BREEZE Risk Analyst
- > BREEZE 3D Analyst
- > BREEZE Noise
- > BREEZE ROADS
- > ...



Accidental Release Modeling

BREEZE Incident Analyst



BREEZE Incident Analyst Capabilities

> Toxic Dispersion

- ❖ Array of source and chemical types
- ❖ Area of toxic/flammable concentrations

> Fire

- ❖ Pool, jet fire, and BLEVE capabilities
- ❖ Area of dangerous/destructive thermal effects

> Explosion

- ❖ “Worst case” vapor cloud explosion modeling
- ❖ Area of dangerous/destructive overpressure

Models in BREEZE BIA

- > **Source Term Calculation Wizard**
- > **Gas Dispersion Models**
 - ❖ Neutrally Buoyant: INPUFF, AFTOX, etc.
 - ❖ Dense Gas: DEGADIS, SLAB
- > **Fire/Explosion Models**
 - ❖ Jet Fire, Unconfined/Confined Pool Fire
 - ❖ TNT, BLEVE, Multi-Energy Models



Scenario Setup: Source Term Wizard

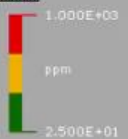
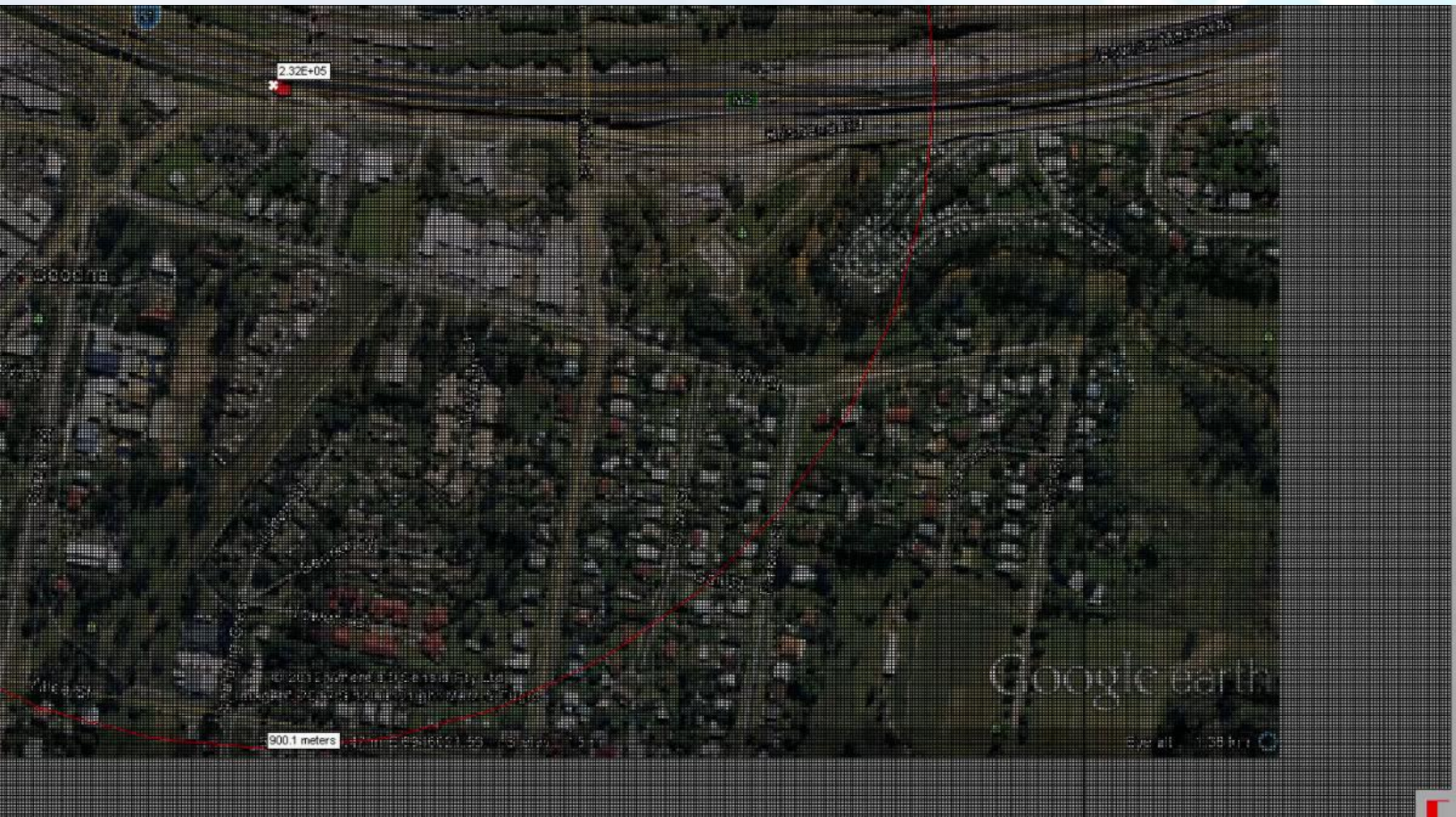
- > Calculates release properties automatically

The screenshot shows a software window titled "Source Term Wizard" with a sub-header "Step 6: Storage Conditions". The main text asks, "Under what conditions is the chemical stored?". There is a checked checkbox labeled "Set the storage pressure to the chemical's vapor pressure at the specified storage temperature". Below this, the "Temperature" is set to "400" with a unit of "K", and the "Pressure" is set to "824.357" with a unit of "psia". The next question is "How much chemical is stored in the container?", with three radio button options: "Total mass", "Liquid volume", and "% of full tank volume". The third option is selected. A text box next to it contains the value "94" followed by a "%" symbol. Below these options, a summary table is displayed:

Total mass:	20757.32 kilograms
Liquid volume:	13.289 m**3
Volume percent:	94%

At the bottom of the window are four buttons: "Help", "< Back", "Next >", and "Cancel".

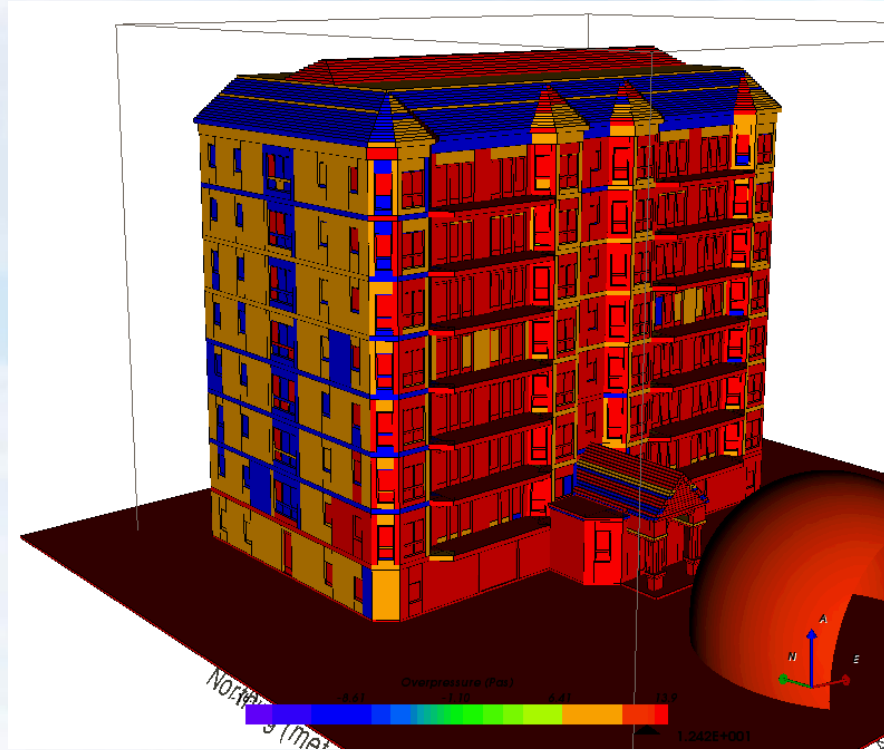
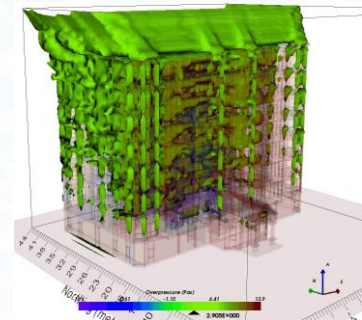
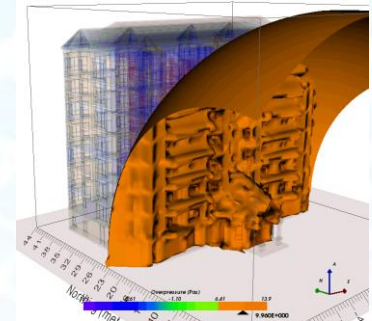
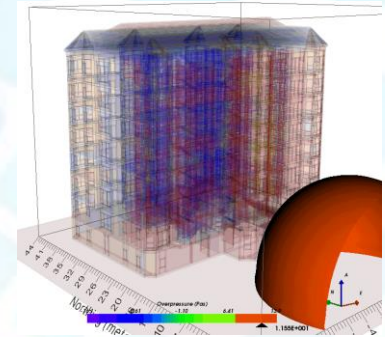
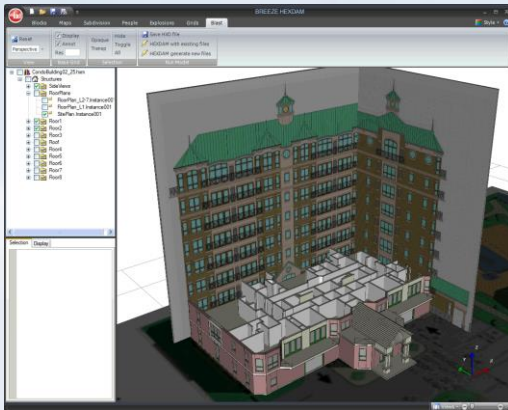
BREEZE Incident Analyst: Results



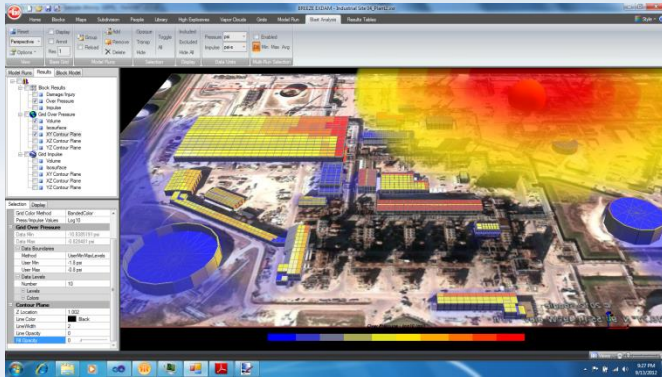
2012/09/11 04:23:27

Advanced Explosion Modeling

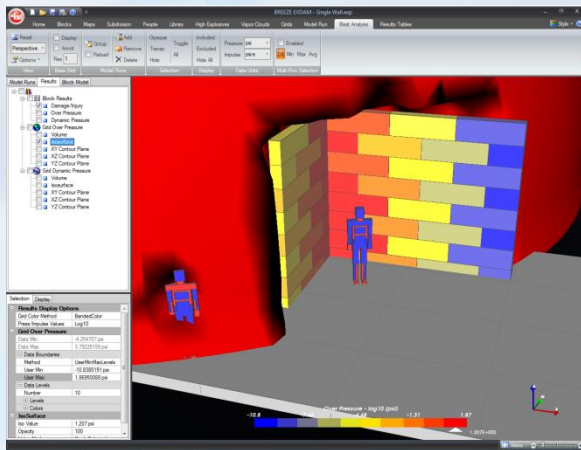
BREEZE ExDAM



BREEZE ExDAM



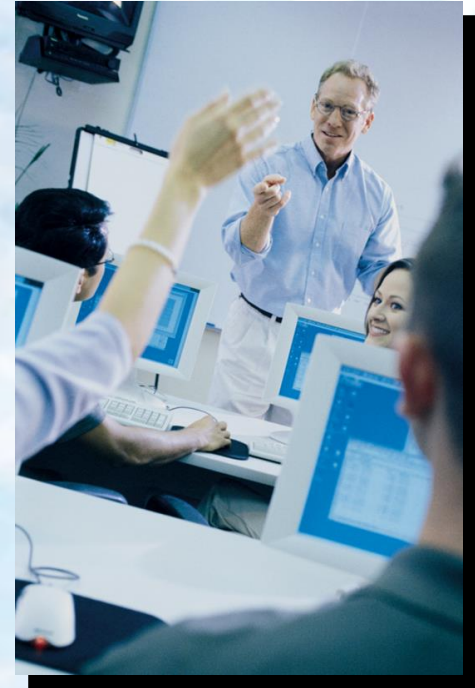
- > Explosion modeling with shielding effects: more advanced than BIA explosion tools
- > Calculates detailed damage estimates for structures (steel, glass, etc.) and personnel (eardrums, limbs, etc.)
- > Intuitive "chop block" interface allows easy creation of very complex/realistic buildings
- > Separate explosion modules:
 - HEXDAM for high explosives (TNT)
 - VEXDAM for vapor clouds



<http://www.breeze-software.com/EXDAM/>

BREEZE Services

- > Professional Training
 - ❖ Off-the-shelf Training Courses (EDU)
 - ❖ Custom Training Courses
 - ❖ Webinar and Remote Training
- > Consulting
 - ❖ Specialized modeling projects
 - Domestic and International
 - Atmospheric Dispersion
 - Hazardous Release/Explosion
 - ❖ Custom Software Development
 - Expanding current product's functionality
 - Recompilations of code
 - Creating new tools from the ground-up
- > Meteorological and Terrain Data

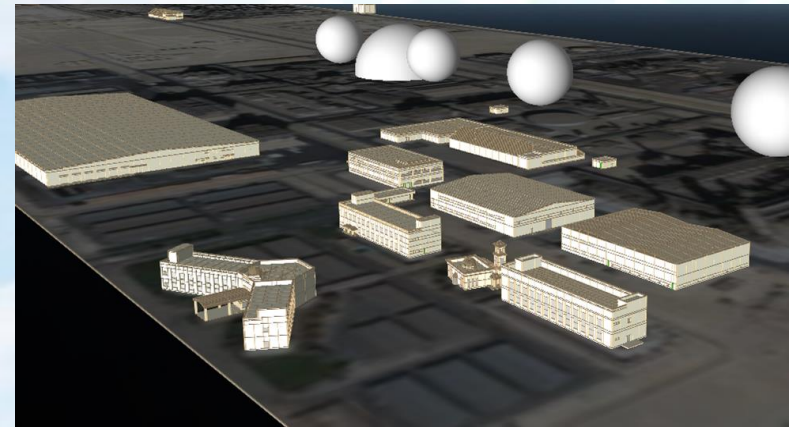


BREEZE Consulting

- > Environmental, health, & safety modeling experts
- > Common areas:
 - ❖ Environmental regulations/hazard assessment (e.g. EPA RMP Off-site Consequence Analysis)
 - ❖ Safety concerns: “Worst case” scenario
 - ❖ Facility design/layout
 - ❖ Risk assessment
- > Expertise in source term characterization

Recent (2013-2014) Example Projects

- > Oil and Gas
 - ❖ Natural gas/associated leak/rupture
 - ❖ North sea blowout
- > Petrochemical
 - ❖ Facility design/layout
- > Semiconductors
 - ❖ Accidental release: Fire and toxics assessment
- > Mining
 - ❖ Air Quality Modeling Assessment



Thank You for Your Attention

Brian Holland

bholland@trinityconsultants.com

+1 972-661-8100

